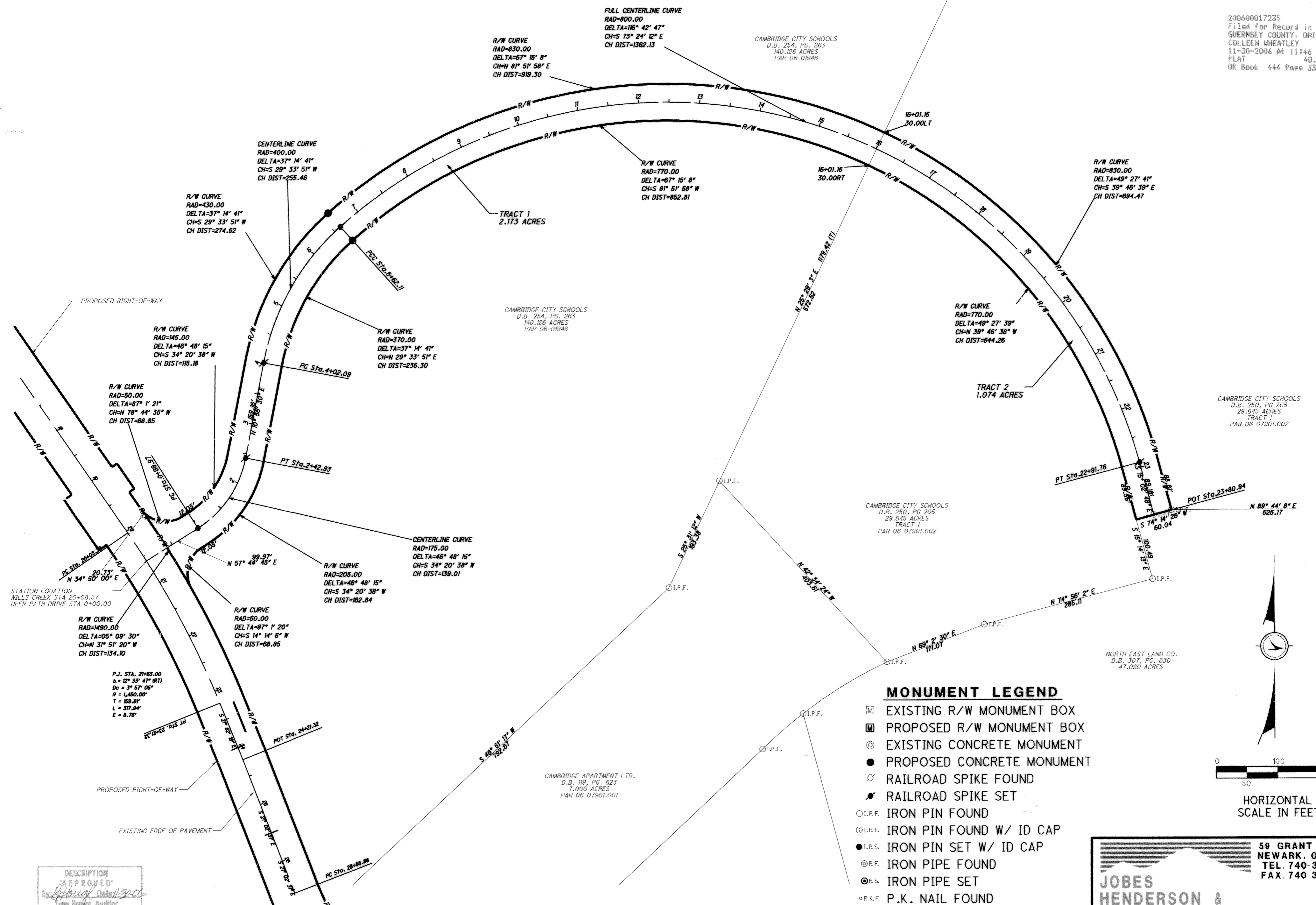


DEDICATION OF DEER PATH DRIVE

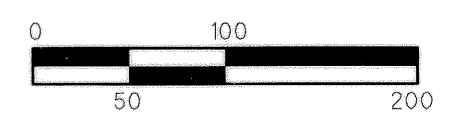
Situated in the City of Cambridge, County of Guernsey, State of Ohio,
Located in Section 8, Township 2, Range 3 of the United States Military Lands

200600017235
Filed for Record in
GUERNSEY COUNTY, OHIO
COLLEEN WHEATLEY
11-30-2006 At 11:46 am.
PLAT 40.00
OR Book 444 Page 3363 - 3363



MONUMENT LEGEND

- ◻ EXISTING R/W MONUMENT BOX
- ◻ PROPOSED R/W MONUMENT BOX
- ⊙ EXISTING CONCRETE MONUMENT
- PROPOSED CONCRETE MONUMENT
- ⚡ RAILROAD SPIKE FOUND
- ⚡ RAILROAD SPIKE SET
- I.P.F. IRON PIN FOUND
- ⊖ I.P.F. IRON PIN FOUND W/ ID CAP
- I.P.S. IRON PIN SET W/ ID CAP
- ⊙ I.P.F. IRON PIPE FOUND
- ⊖ I.P.F. IRON PIPE SET
- ⊙ P.K.F. P.K. NAIL FOUND
- P.K.S. P.K. NAIL SET



HORIZONTAL SCALE IN FEET

DESCRIPTION
APPROVED
By *Deimar E. George*
Tony Brown, Auditor
Deimar E. George, Engineer

JOBES HENDERSON & ASSOCIATES INC. www.jobeshenderson.com
CIVIL ENGINEERING & LAND SURVEYING SINCE 1965

59 GRANT STREET
NEWARK, OH 43055
TEL. 740-344-5451
FAX. 740-344-5746

11/21/2006 1:58:16 PM S:\05\05-081\060\0601\0601.dwg